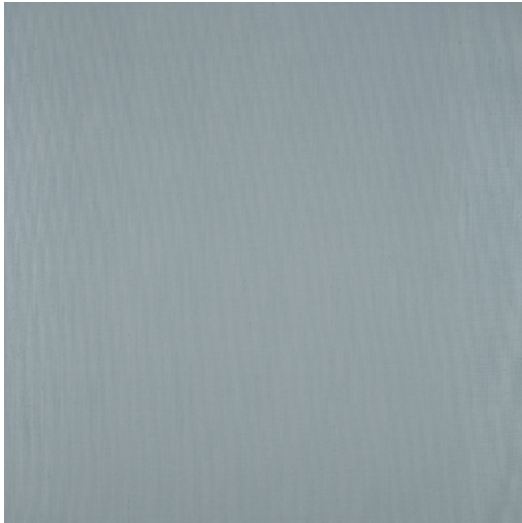




## ROME



|                        |                                    |
|------------------------|------------------------------------|
| <b>Referentie</b>      | ROME 12A                           |
| <b>Dimensies</b>       | H ± 300 CM (± 118 IN)<br>Kamerhoog |
| <b>Samenstelling</b>   | 100% PL Trevira CS                 |
| <b>Gewicht</b>         | ± 294 gr/m                         |
| <b>Brandvertragend</b> | Ja                                 |
| <b>Onderhoud</b>       |                                    |
| <b>Collectie</b>       | capital                            |
| <b>Gebruik</b>         | Gordijnen<br>Contract              |