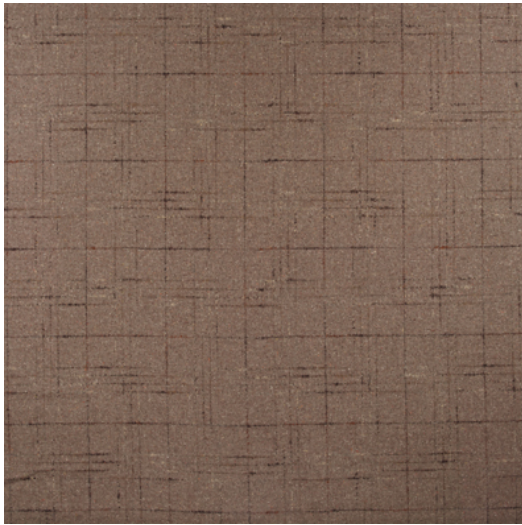




WELLINGTON



| | |
|---------------------------|---|
| Référence | WELLINGTON 5 |
| Couleur | Brun |
| Dimensions | Br/Lg/W \pm 140 CM (\pm 55.1 IN) |
| Raccord | H \pm 20 CM (\pm 7.9 IN) |
| Composition | 50% WO - 37% PAN - 11% PL - 1% PA - 1% WP |
| Martindale/Pilling | Martindale: 30.000 Pilling: 4-5 LD |
| Poids | \pm 680 gr/m |
| Non Feu | Non |
| Entretien | ☒☒☒☒☒☒☒ |
| Collection | wools |
| Utilisation | Siège |