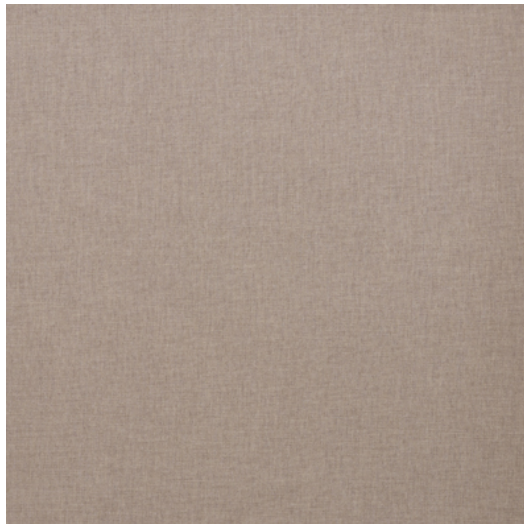


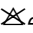







## ALBATROS



**Référence** ALBATROS 6B  
**Couleur** Naturel  
**Dimensions** H ± 300 CM (± 118 IN)  
Grande hauteur  
**Composition** 100% ORGANIC CO  
**Poids** ± 549 gr/m  
**Non Feu** Non  
**Entretien**        
**Utilisation** Rideau