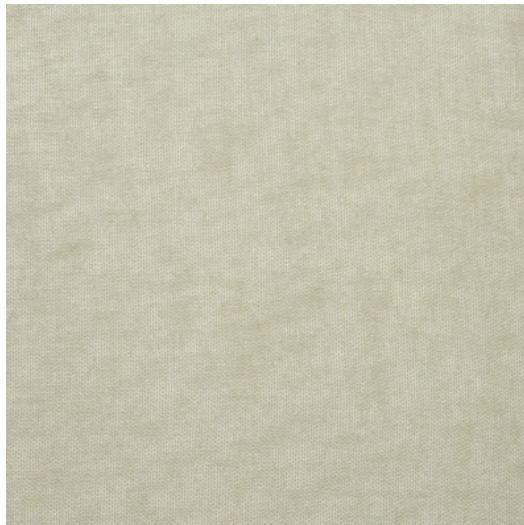




## TRINITY



**Référence** TRINITY 6A  
**Couleur** Naturel  
**Dimensions** H ± 295 - 300 CM (± 116 - 118 IN)  
Grande hauteur  
**Composition** 100% PL avec fil de plomb eco  
**Poids** ± 240 gr/m  
**Non Feu** Non  
**Entretien** A set of six small icons representing different care instructions: a crossed-out iron, a crossed-out washing machine, a crossed-out dryer, a crossed-out bleach, a crossed-out detergent, and a crossed-out dry clean.  
**Collection** square  
**Utilisation** Rideau