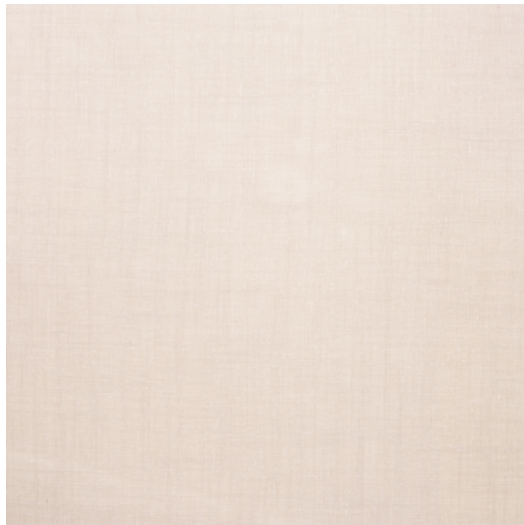




## QUEEN



**Référence** QUEEN 8D  
**Couleur** Naturel  
**Dimensions** H ± 295 - 300 CM (± 116 - 118 IN)  
Grande hauteur  
**Composition** 70% PL - 30% LI  
**Poids** ± 330 gr/m  
**Non Feu** Non  
**Entretien** A set of six small icons representing different care instructions: a crown, a crossed-out crown, a crossed-out crown with a circle, a crossed-out crown with a square, a crossed-out crown with a circle and square, and a crossed-out crown with a square and circle.  
**Collection** Regency  
**Utilisation** Rideau