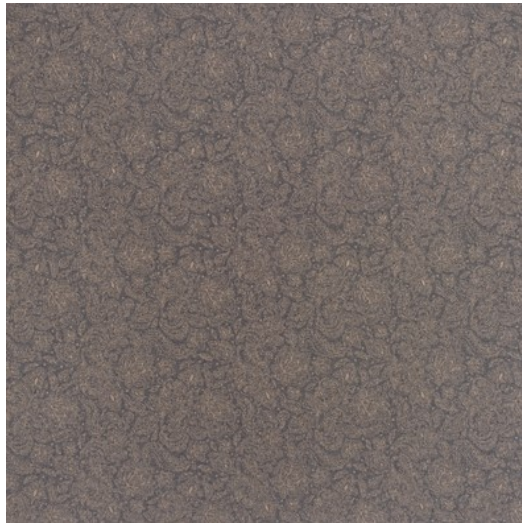




## BALMORAL



|                           |   |
|---------------------------|---|
| <b>Référence</b>          | BALMORAL 7                                |
| <b>Couleur</b>            | Naturel                                   |
| <b>Dimensions</b>         | Br/L/W ± 140 - 145 CM (± 55.1 - 57.1 IN)  |
| <b>Raccord</b>            | H ± 26 - 27,5 CM (± 10.2 - 10.8 IN)       |
| <b>Composition</b>        | 80% WO - 20% PA                           |
| <b>Martindale/Pilling</b> | Martindale: 60.000<br>Pilling: 3 - 4 / GD |
| <b>Poids</b>              | ± 480 gr/m                                |
| <b>Non Feu</b>            | Non                                       |
| <b>Entretien</b>          | ☒☒☒☒☒☒<br>Repasser à l'envers             |
| <b>Collection</b>         | Scotland                                  |
| <b>Utilisation</b>        | Rideau<br>Siège                           |