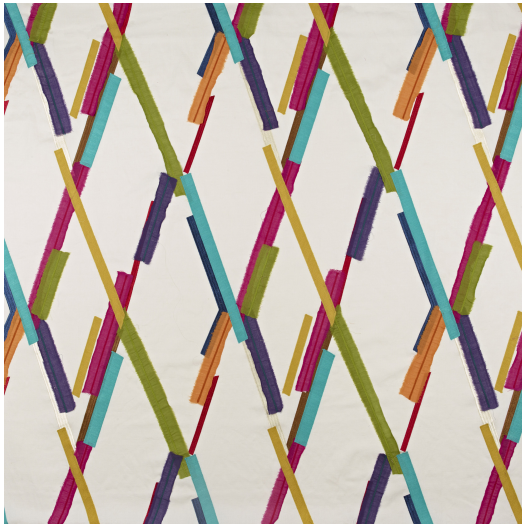




POPSTAR



Reference	POPSTAR MULTI
Colour	Multi
Dimensions	Br/Lg/W \pm 131 CM (\pm 51.6 IN)
Repeat	H \pm 59 CM (\pm 23.2 IN)
Composition	46% CO - 38% LI - 7% PAN - 6% VI - 3% PL
Weight	\pm 428 gr/m
Flame retardant	Yes
Care code	Iron wrong side only
Collection	spectrum
Use	Curtains