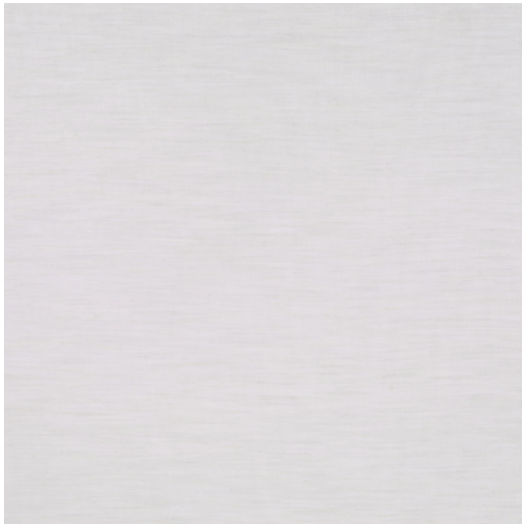
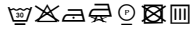




YUCCA



Reference YUCCA 8B
Colour Natural
Dimensions H \pm 345 - 350 CM (\pm 136 - 138 IN)
Width shown railroaded
Composition 87% PL - 13% LI
Weight \pm 315 gr/m
Flame retardant Yes
Care code  Iron wrong side only
Collection botany
Use Curtains