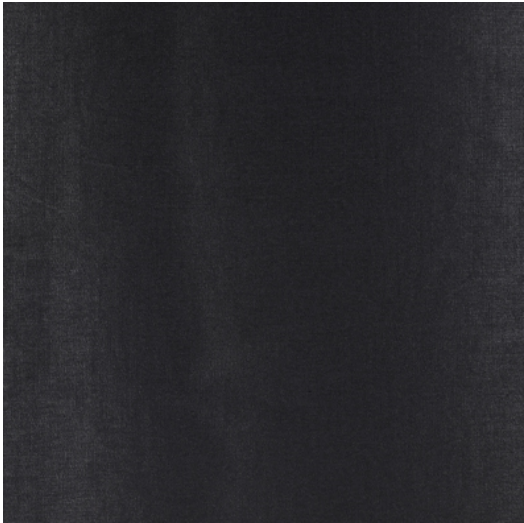




HECTOR



Reference	HECTOR 4
Colour	Black
Dimensions	H ± 295 - 300 CM (± 116 - 118 IN) Width shown railroaded
Composition	64% PL - 36% CO
Martindale/Pilling	Martindale: 50.000 Pilling: 4-5 GD
Weight	± 822 gr/m
Flame retardant	No
Care code	☞☞☞☞☞☞☞☞☞☞
Collection	mythology
Use	Curtains Upholstery