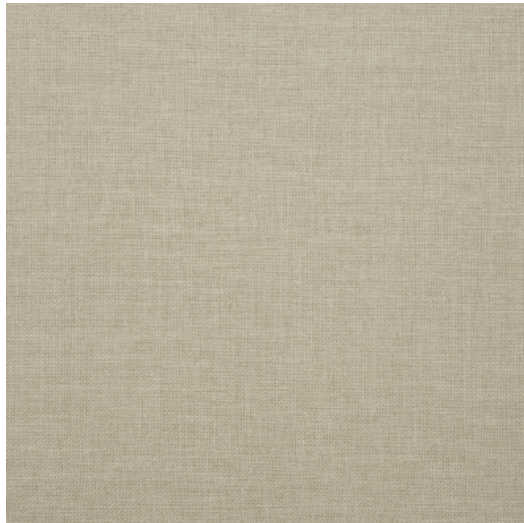
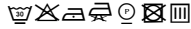


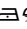

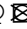





## CASPIAN



**Reference** CASPIAN 6A  
**Colour** Natural  
**Dimensions** H  $\pm$  295 - 300 CM ( $\pm$  116 - 118 IN)  
Width shown railroaded  
**Composition** 55% RP - 45% PL  
**Weight**  $\pm$  1092 gr/m  
**Flame retardant** No  
**Care code**         
**Use** Curtains