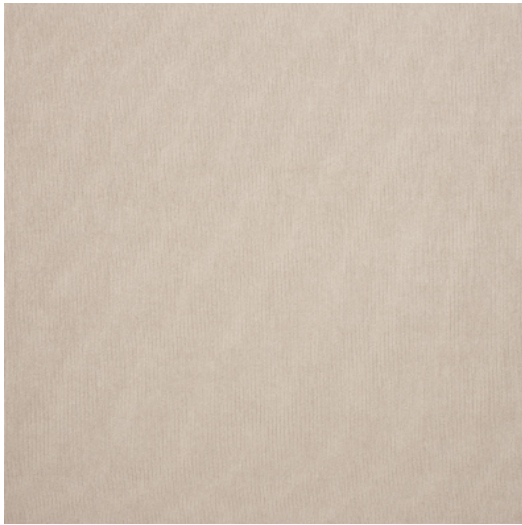
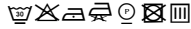




## BERLIN



**Reference** BERLIN 6B  
**Colour** Natural  
**Dimensions** H  $\pm$  295 - 300 CM ( $\pm$  116 - 118 IN)  
Width shown railroaded  
**Composition** 100% PL FR  
**Weight**  $\pm$  1173 gr/m  
**Flame retardant** Yes  
**Care code**   $\text{W} \text{X} \text{A} \text{B} \text{C} \text{D} \text{E} \text{F}$   
Iron wrong side only  
**Collection** capital  
**Use** Curtains  
Contract