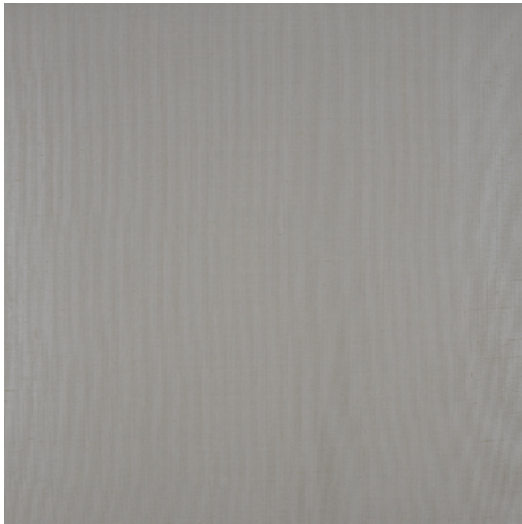
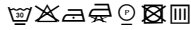




## ROME



**Reference** ROME 6B  
**Colour** Natural  
**Dimensions** H  $\pm$  300 CM ( $\pm$  118 IN)  
Width shown railroaded  
**Composition** 100% PL Trevira CS  
**Weight**  $\pm$  294 gr/m  
**Flame retardant** Yes  
**Care code**   
**Collection** capital  
**Use** Curtains  
Contract