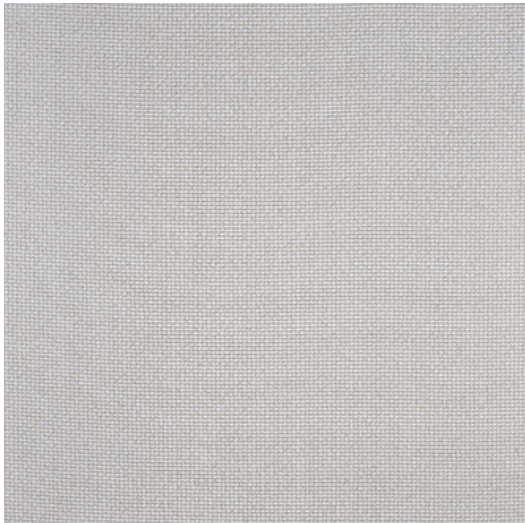




# JUBILEE



**Reference** JUBILEE 12A  
**Dimensions** H ± 310 - 315 CM (± 122 - 124 IN)  
Width shown railroaded  
**Composition** 53% PC - 47% PL with eco leadband  
**Weight** ± 482 gr/m  
**Flame retardant** No  
**Care code** A set of six small icons representing different care instructions: a triangle with a slash, a crossed-out square, a square with a circle, a circle with a slash, a square with a cross, and a square with a vertical line.  
**Collection** bridges  
**Use** Curtains