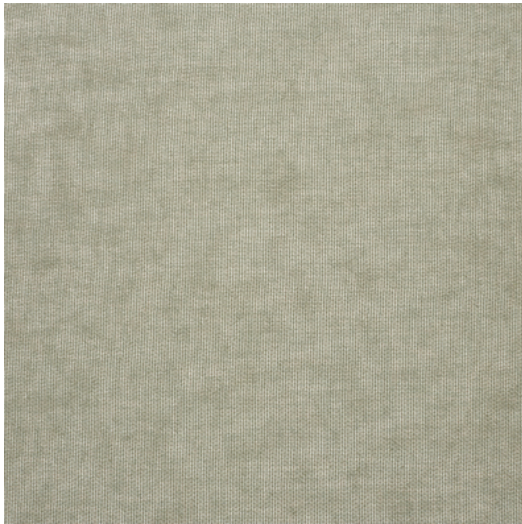
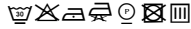
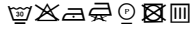




## TRINITY



**Reference** TRINITY 6B  
**Colour** Natural  
**Dimensions** H  $\pm$  295 - 300 CM ( $\pm$  116 - 118 IN)  
Width shown railroaded  
**Composition** 100% PL with eco leadband  
**Weight**  $\pm$  240 gr/m  
**Flame retardant** No  
**Care code**    
**Collection** square  
**Use** Curtains