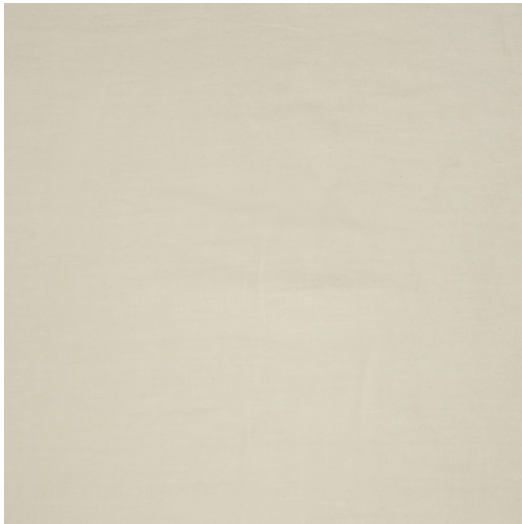




## CALISTA



**Reference** CALISTA 8B  
**Colour** Natural  
**Dimensions** H  $\pm$  310 CM ( $\pm$  122 IN)  
Width shown railroaded  
**Composition** 100% LI  
**Weight**  $\pm$  595 gr/m  
**Flame retardant** No  
**Care code** A set of care icons including a washing machine, a crossed-out iron, a crossed-out dryer, a crossed-out bleach, a crossed-out detergent, and a crossed-out stain remover.  
**Collection** Pure  
**Use** Curtains