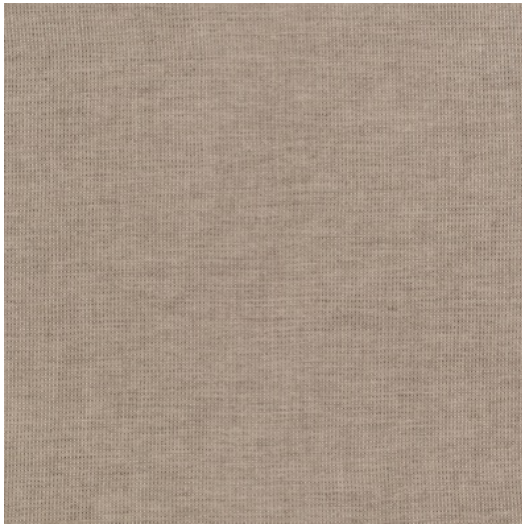




KILIMANJARO



| | |
|---------------------------|-----------------------------------------------------------------------------------------------------------------------------------------|
| Referenz | KILIMANJARO |
| Farbe | Natur |
| Dimensionen | Br/L/W ± 130-135 CM (± 51.2-53.1 IN) |
| Material | 100% LI |
| Martindale/Pilling | Martindale: 20.000 Pilling: 3 - 4 / LD |
| Gewicht | ± 108.5 gr/m |
| Schwer entflammbar | Nein |
| Hinweise | A set of four small icons: a crossed-out washing machine, a crossed-out iron, a crossed-out dryer, and a crossed-out circle with a dot. |
| Kollektion | Adventure |
| Anwendung | Dekostoffe Bezugsstoffe |